



— EXCLUSIVE KITCHEN COLLECTION —



— INSTALLATION MANUAL —

Pour la version française, veuillez scanner le code QR suivant:



Para la versión en español, escanee este código QR:



Contents

Steps for a Successful Installation	05
Tools & Items	11
Components	15
Installation Protocol	23
Cabinetry	24
Countertop	35
Appliances	40
Siliconing the Appliance and Countertop Seams	42
Faucet and Sink	44
Final Adjustments	46
Care & Maintenance	53

Steps for a Successful Installation

Please read the following important points as they will greatly facilitate the entire outdoor kitchen installation process.

1. Prepare the Site

- 1.1 Your outdoor kitchen should always be installed on a stable surface (patio/deck/balcony/roof) which should be as near to level as drainage requirements allow.
- 1.2 All cabinets come standard with adjustable stainless steel legs. However, in instances of extreme slope, or very large kitchens, footings may be needed to compensate if it falls out of the adjustable range of the legs.
- 1.3 Your kitchen has been designed to be freestanding and does not need to be affixed to the ground/wall. For extreme environments, such as high wind areas, we suggest that your kitchen be secured to an appropriate support structure. Please consult with your contractor/engineer for specifics.
- 1.4 Verify with your contractor/engineer to ensure that the surface is designed to support the weight of the kitchen.

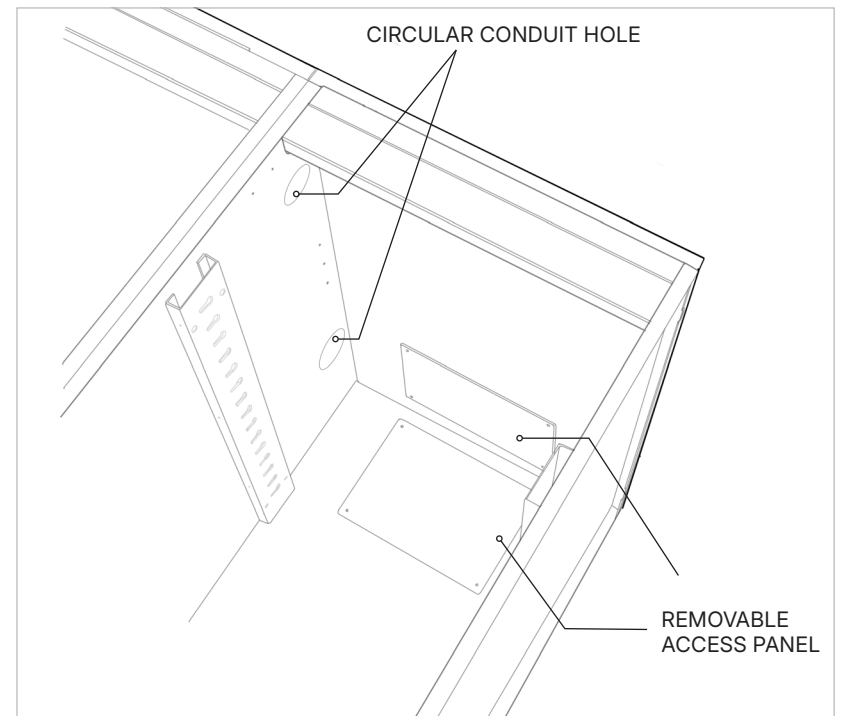
2. Planning for Equipment

- 2.1 Although your outdoor kitchen is made of non-combustible materials and, as such, does not require insulating jackets for the equipment, gas and live fire appliances have very specific restrictions for safe installation and use, which can vary from one jurisdiction to another. Please review the owner's manuals for all appliances before installation and ensure the work is done by a professional in accordance with local codes.
- 2.2 Your outdoor kitchen has been designed for a specific appliance. Before ordering your equipment, please verify that it matches with the model number listed on your final kitchen design document.

3. Planning for Services (Gas/Electrical/Plumbing)

Conduit holes and access panels are included in most cabinets to make service planning and implementation as easy as possible.

As with equipment, local codes have specific requirements and restrictions for all services. **Please ensure that planning and installation is performed by a locally licensed tradesperson.**



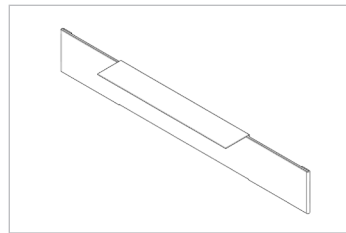
4. Before Unpacking your Kitchen

Your outdoor kitchen ships with cabinets fully assembled, making cabinet installation quick and straightforward. However, within the cabinets themselves there are accessories and smaller pieces that can easily be misplaced on a busy job site. As such, we suggest taking special care to locate these pieces during unpacking so that they can be set aside for when they are needed during the installation process.

In our experience, parts that can be lost in the shuffle include:

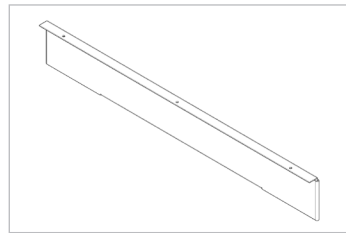
Front Toe Kicks

Each cabinet includes **one** 2-piece front toe kick.



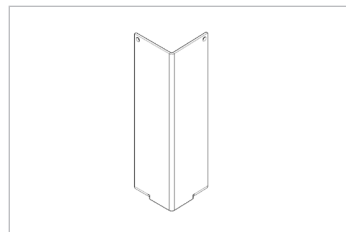
Toe Kicks for End Panel and for Finished Back Panel

Each end panel will include **one**, 2-piece, toe kick. Cabinets with finished back panels will include a **one**, 2-piece, toe kick as well.



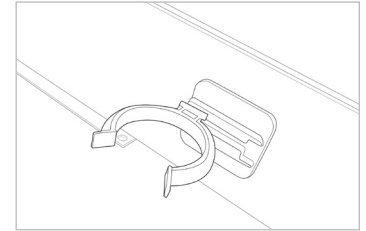
Corner Toe Kick

Each end panel will include **two** toe kick corners.



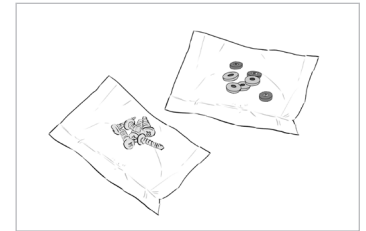
Toe Kick Clips

These plastic clips allow the front toe kicks to be installed onto the cabinets legs. These are packed along with the installation hardware (screws/nuts/bolts) for each kitchen.



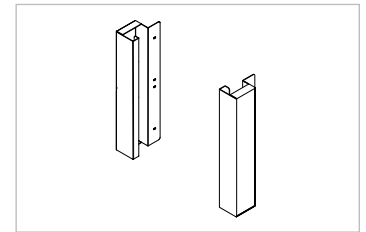
Extra Hardware/Magnets/Bumpers

Maintenance kit.



Grill Side Trims

Allows the cabinet to professionally integrate with the appliance.



Tools & Items

Outdoor Kitchen

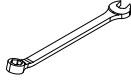
TOOLS REQUIRED



Robertson #2 Screwdriver
and/or drill bit



Phillips #2 Head Screwdriver
and/or drill bit



3/8 Wrench



Level



Right Angle Adapter or Drill
(recommended)



Metal Hacksaw



Masking Tape

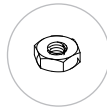
ITEMS PROVIDED



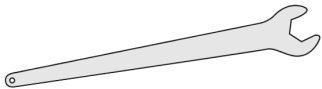
#8 Screws



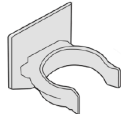
2" 8-32 Bolts



Nuts



Leg Wrench



Toe Kick Clips

Countertop

TOOLS REQUIRED



Masking Tape

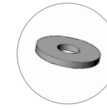


Silicone

ITEMS PROVIDED



M6 studs



Washers



Nuts (m6)



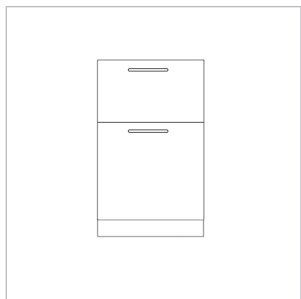
Allen Hex Key



Shims

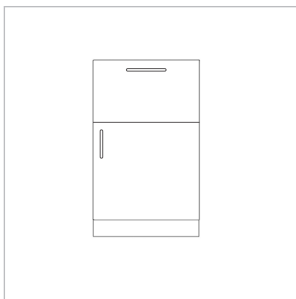
Components

Outdoor Kitchen



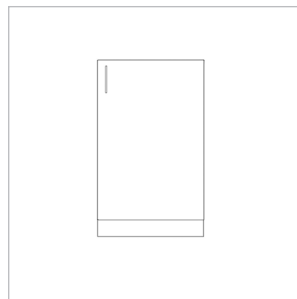
A

Storage & Refuse Cabinet



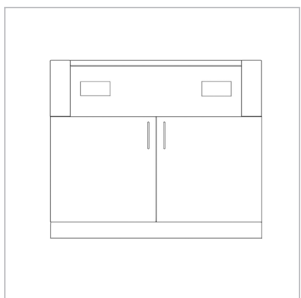
B

Storage Cabinet



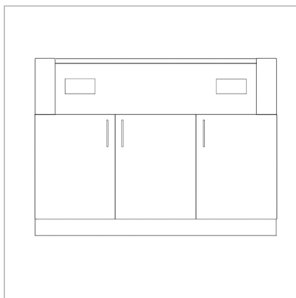
C

Sink Cabinet



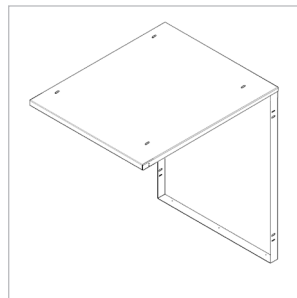
D

Grill Base Cabinet for
32" Grill



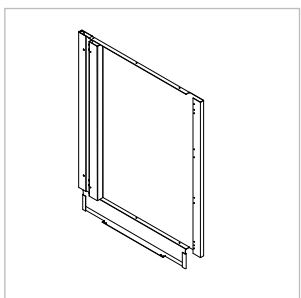
E

Grill Base Cabinet
for 40" Grill



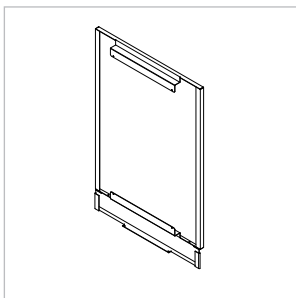
FRDG

Kit for Refrigerator (24")



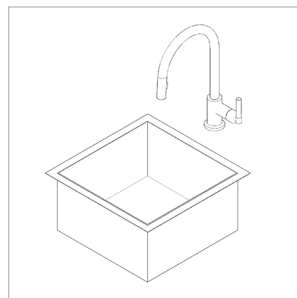
END

End panels



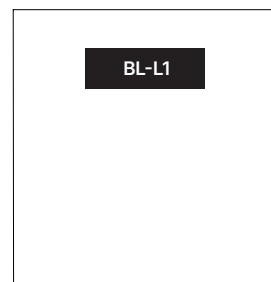
BCKP

Back panels

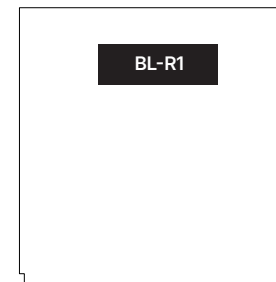


Sink & Faucet

Countertop Pieces



BL-L1



BL-R1



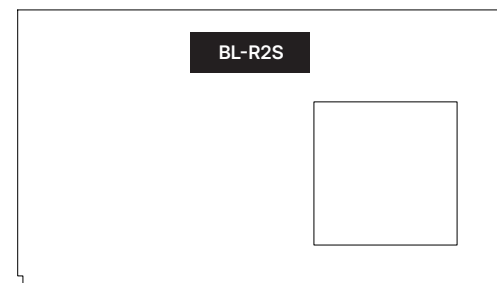
BL-M32



BL-M40



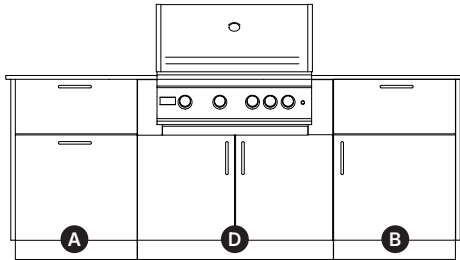
BL-R2



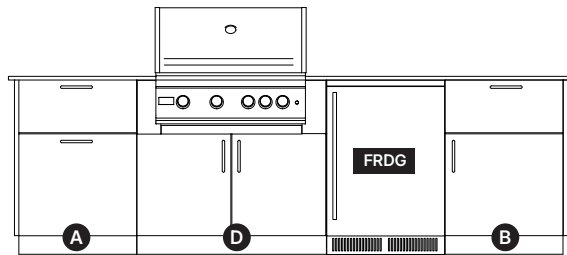
BL-R2S

Appendix

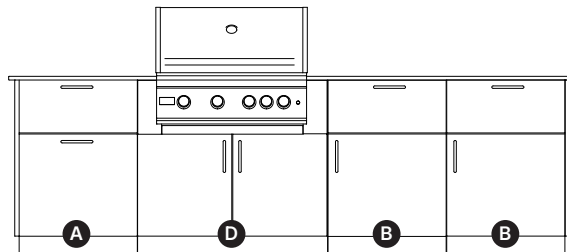
SUNRISE 32



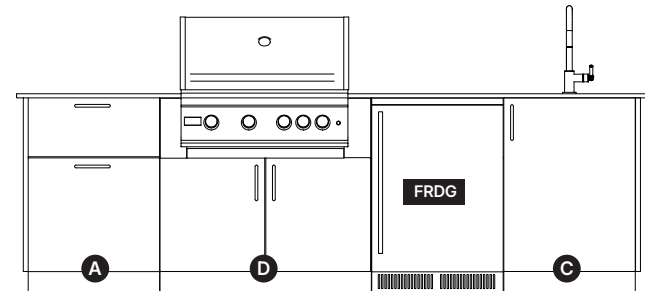
MORNING GLOW 32



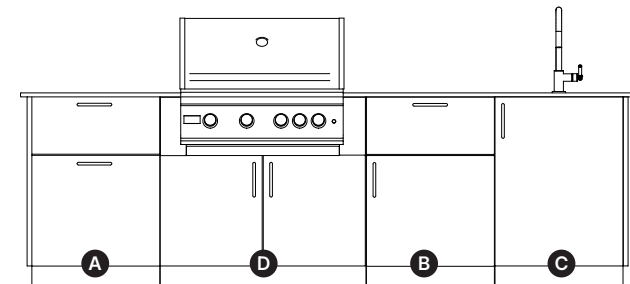
HIGH NOON 32



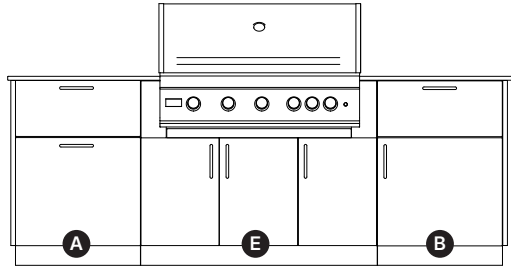
GOLDEN HOUR 32



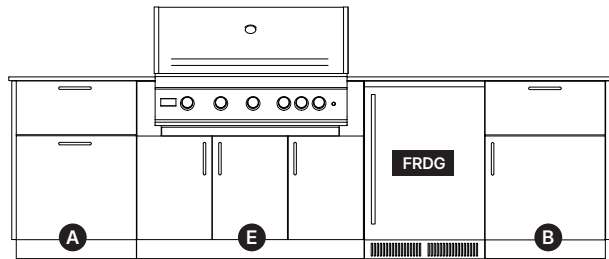
SUNSET 32



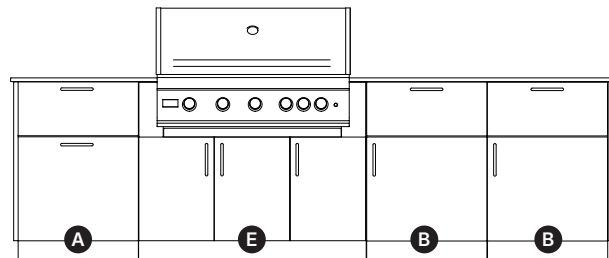
SUNRISE 40



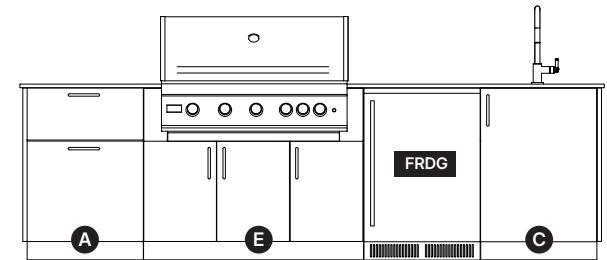
MORNING GLOW 40



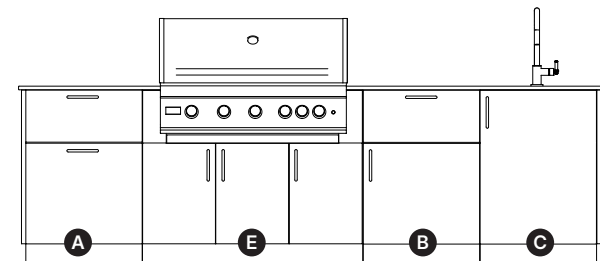
HIGH NOON 40



GOLDEN HOUR 40



SUNSET 40



Installation Protocol

For safety, efficiency and best results, it is strongly suggested that installation be performed by **2 people**.

Cabinetry

1. Getting Started

1.1 Measure out the installation area and mark the kitchen location (Please reference the **Appendix on pages 18 to 21** to find the plan of your specific layout).

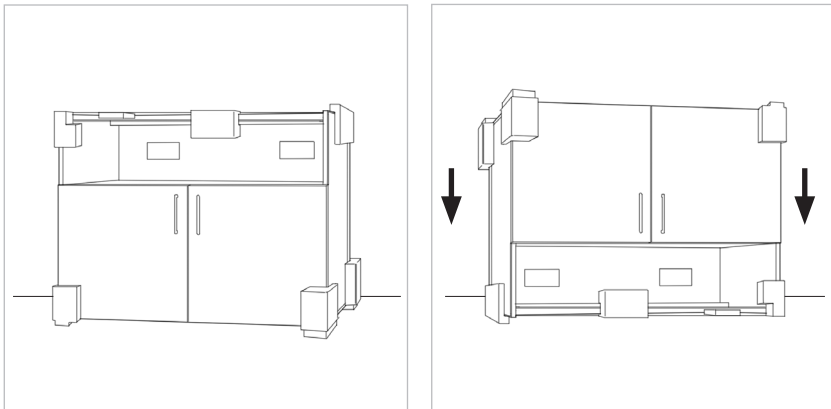
1.2 Unpack your kitchen. Cabinets should be manipulated by 2 persons.

Each cabinet comes fully assembled and is packed in its own box, which is numbered corresponding to the final design plans.

Unbox the cabinets while leaving any shrink wrap and protective foam corners in place.

ii) Remove the internal components and any small boxes, when applicable, through the top of the cabinet (paying special attention to small parts listed on **pages 08-09**).

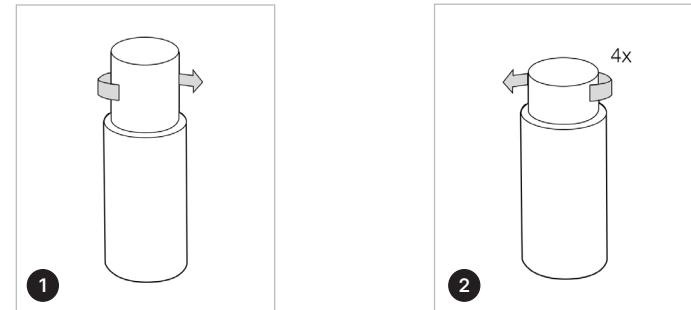
1.3 Flip the cabinets upside down, resting them on the protective foam corners to avoid damage.



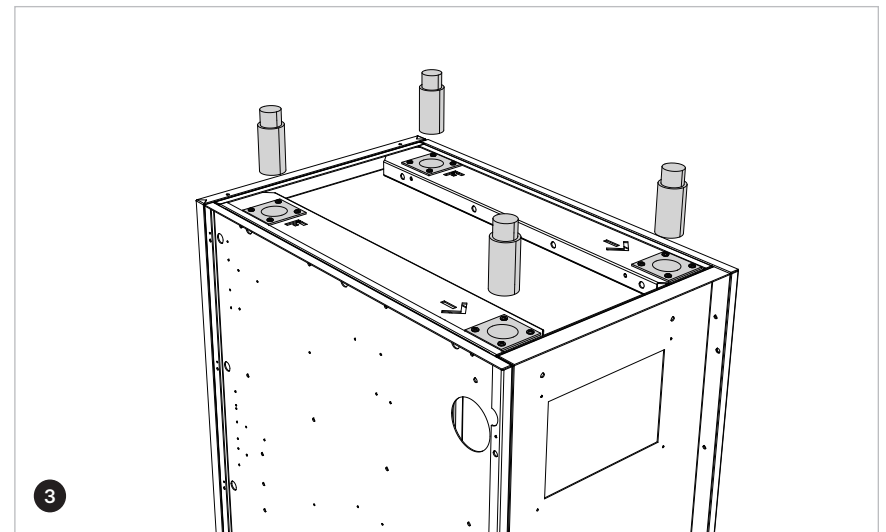
2. Cabinet Legs

2.1 Attach the stainless steel leveling legs to cabinets:

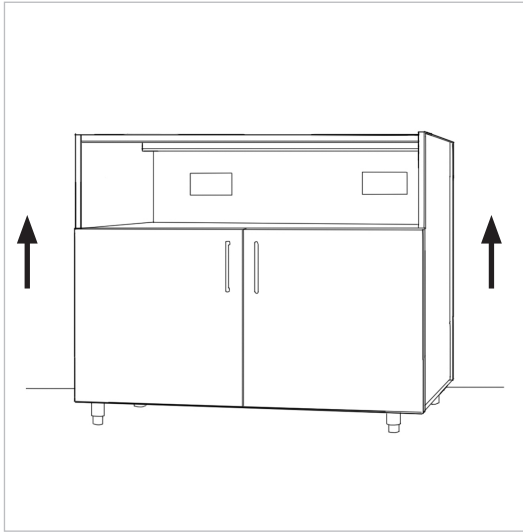
For best results, we strongly suggests starting with the leveling legs as low as possible, leaving the ability to raise them, to level, later in the process.



- 1 Turn the leg clockwise until the leg is as short as it can be.
- 2 When the maximum is reached, stop and turn counterclockwise 4 times.
- 3 Screw the legs onto the mounting plates on the bottom of the cabinet.



2.2 Flip the cabinets right side up so that they are sitting on the legs.



2.3 Remove the shrink wrap and protective foam corners.

2.4 Arrange the cabinets in order, left to right, accordingly to the plan of your specific kitchen layout.

3. End Panels to the Cabinets

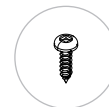
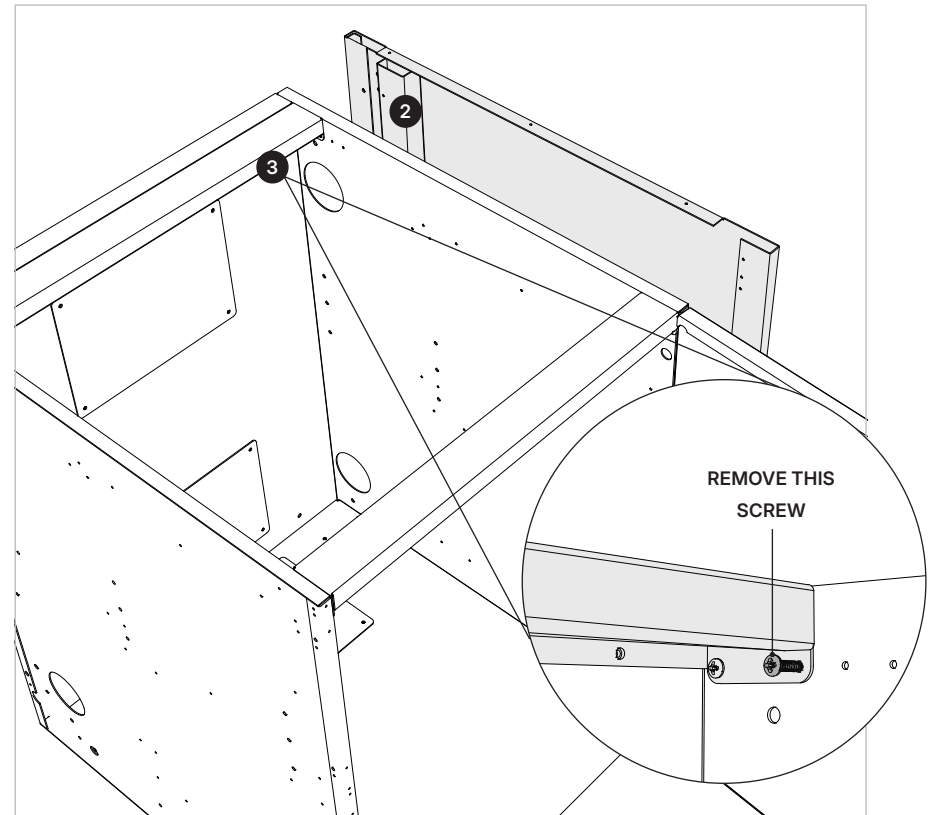
3.1 Locate and unpack the two end panels (being careful to set the toe kicks somewhere safe for use later).

3.2 From inside the leftmost cabinet, attach the end panel using 4x n°8 screws - two at the top and two at the bottom.

3.3 From inside the rightmost cabinet, attach the end panel using 4x n°8 screws - two at the top and two at the bottom.

TO NOTE

- 1 These end panels are **reversible**, so they will each fit on either end of the layout.
- 2 The **vertical channel** on the inside of the end panel should be **aligned towards the back**.
- 3 The **front screw** holding the back top box in place will **need to be removed** to allow the endpanel to sit properly.

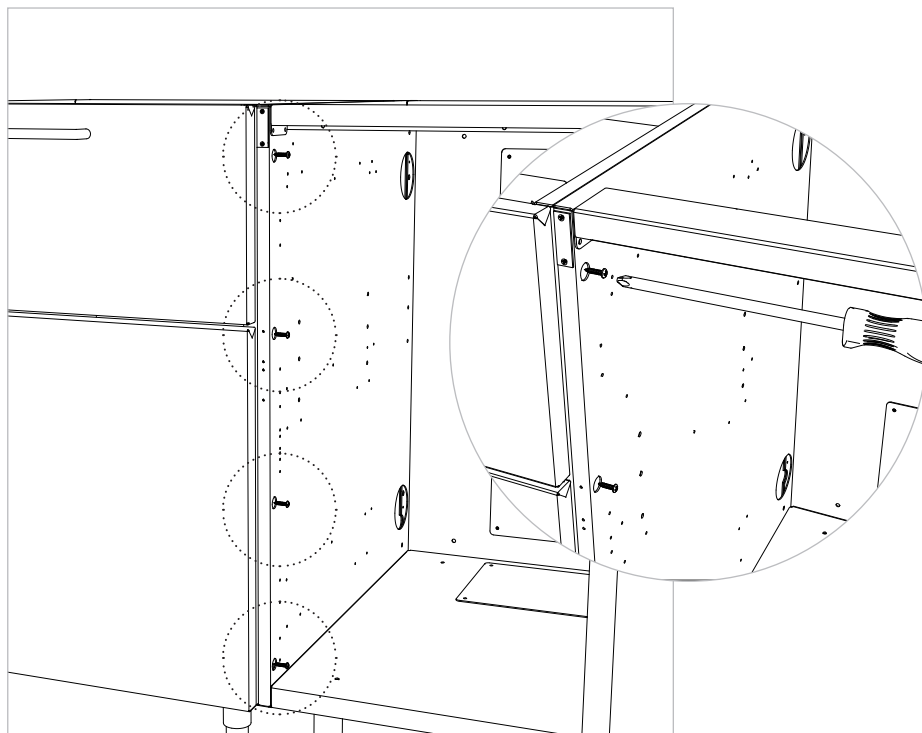


N°8 SCREW

4. Attaching the Cabinets Together

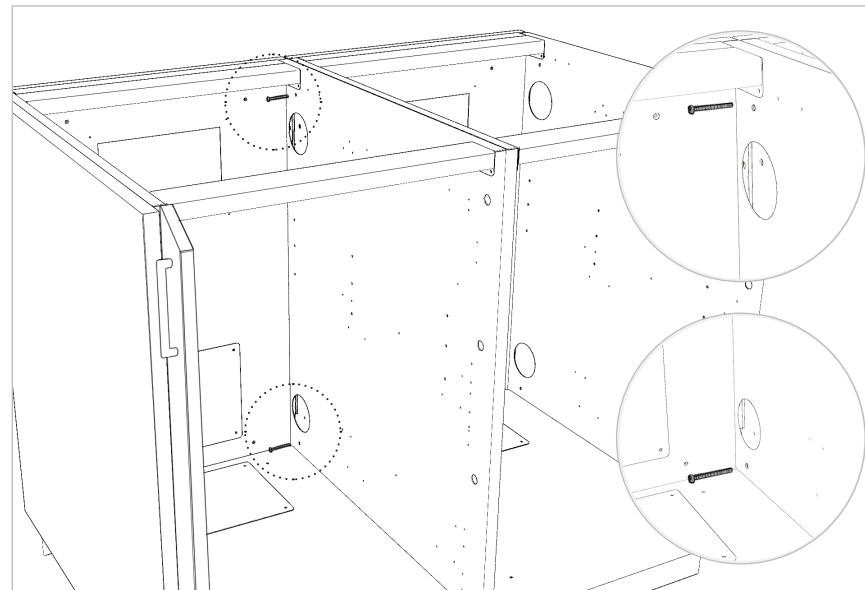
4.1 Refer to **your specs sheet** (included in packing slip) to arrange your cabinets into proper layout by following the labels on each cabinet.

4.2 Connect cabinets to each other in the front using 4x n°8 screws.
DO NOT OVERTORQUE.



N°8 SCREW

4.3 Attach the back of the cabinets together using 2x 2" long 8-32 bolts and nuts.
This is done through the holes in located at the top and bottom of the back of the cabinets.



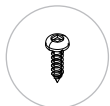
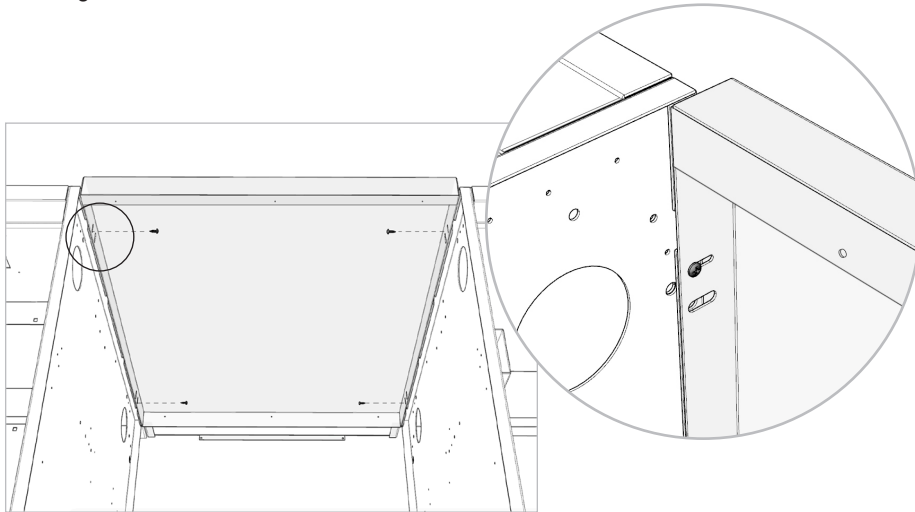
2 IN. 8-32 BOLT



NUT

5. Undercounter Appliance Kit (if applicable)

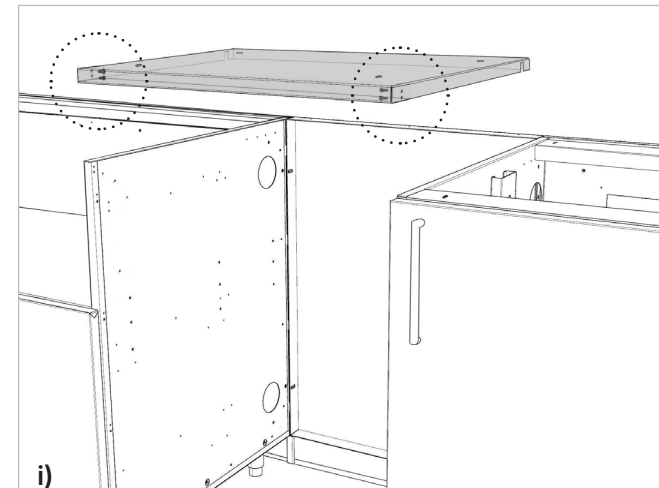
5.1 If your kitchen features undercounter refrigeration, install the Back Panel to the adjacent cabinets using 4x n°8 screws. The screws should be installed towards the front. See in the below figure.



N°8 SCREW

Note: If your kitchen does not include finished back panels, it is normal that this fridge back panel will sit slightly behind the rest of the cabinets once installed.

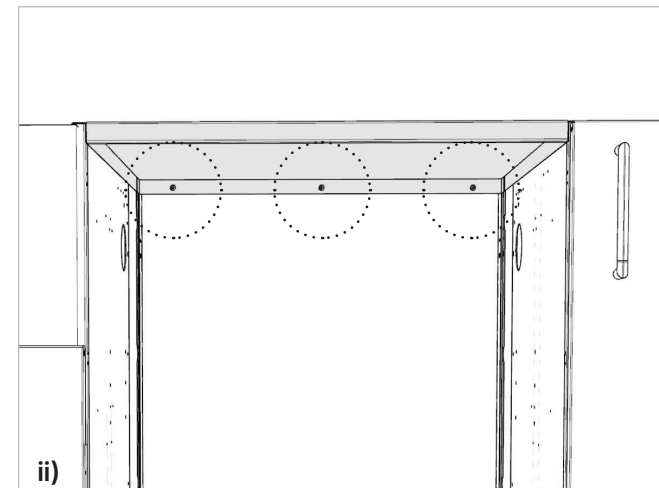
5.2 Install the top panel with the flat section facing up (it will be supporting the countertop), using 7x n°8 screws (2x on each side and 3x at the back). Fasten from underneath.



i)



N°8 SCREW



ii)

6. Leveling

Once all cabinets are attached together, make sure the whole kitchen is leveled properly.

For best results, it is strongly suggested starting with the leveling legs as low as possible, leaving the ability to raise them, to level, later in the process.

If your kitchen needs to be leveled, follow these helpful steps :



LEVEL



LEG WRENCH

6.1 Using a **level**, locate the cabinet which is sitting the highest. This will let you know the high point of the floor.

6.2 Using a level, adjust the feet so that this, highest, cabinet is sitting perfectly level with all four of its feet firmly on the floor (use the **leg wrench**, if needed, when adjusting the back legs of the cabinets). This will be your starting point.

6.3 Using a level, work outwards from this starting point, one cabinet at a time, raising the adjustable feet as needed to ensure each subsequent cabinet is raised to the same height as the starting point.

6.3 Ensure ALL four legs for each subsequent cabinet are firmly on the floor.

6.4 Using a level, verify that the entire kitchen is now level.

Proper leveling is important since it will create a flat surface for countertop installation. It will also create even gaps between adjacent doors and drawers.

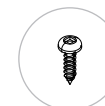
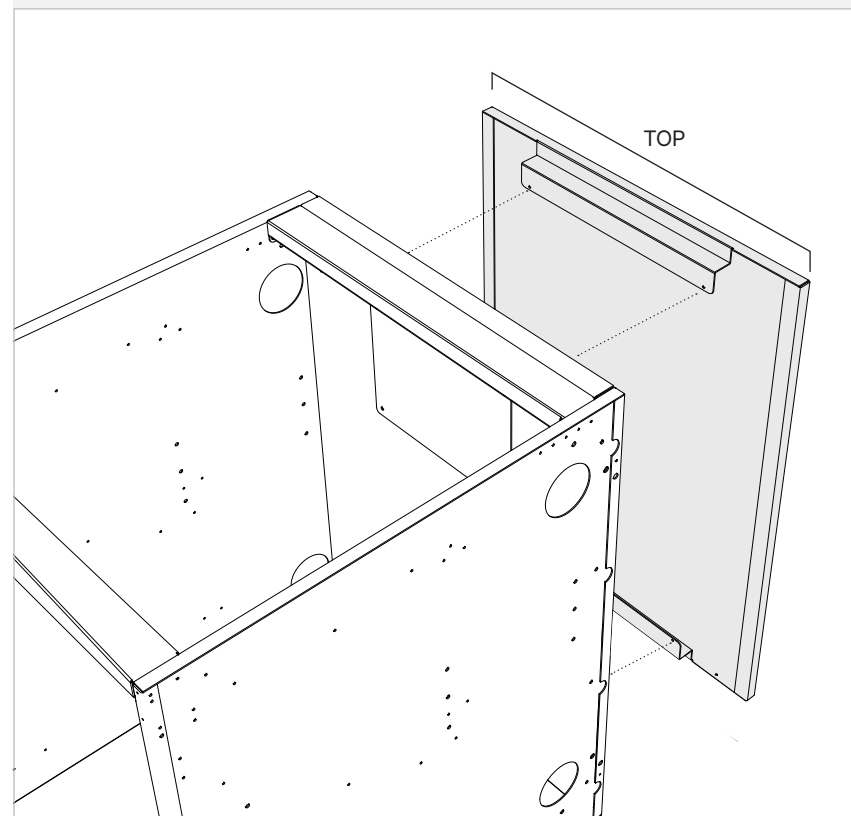
7. Back Panels to the Cabinets (if applicable)

7.1 Locate and unpack the finished back panels (being careful to set the toe kicks somewhere safe for use later)

7.2 From inside the cabinets, attach each respective back panel using 4x n°8 screws - two at the top and two at the bottom.

IMPORTANT

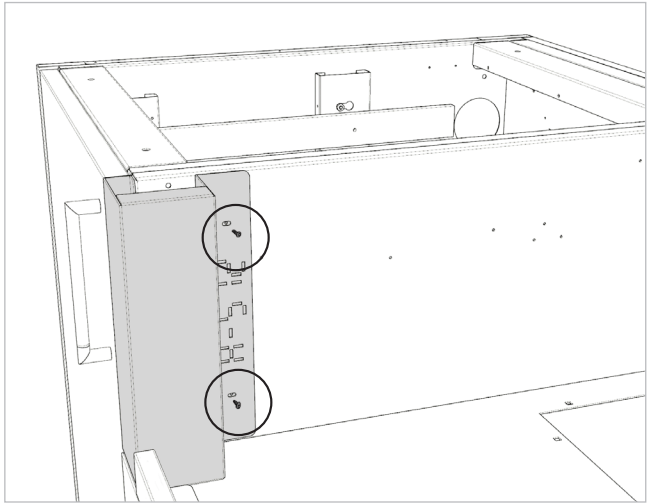
The backpanels are **NOT** reversible. In order to ensure they are installed correctly, please pay special attention that the **top** of the back panel is the flat, hole-free side.



N°8 SCREW

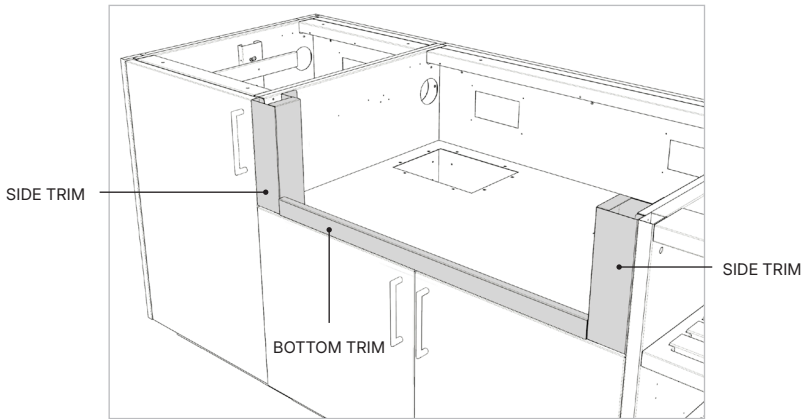
8. Installing the Trim Kit

8.1 Remove the shipping bracket that is installed on the cabinet and install the Side Trims using **n°8 screws** on both sides.



N°8 SCREW

Once all installed, the trim kit should look like this.



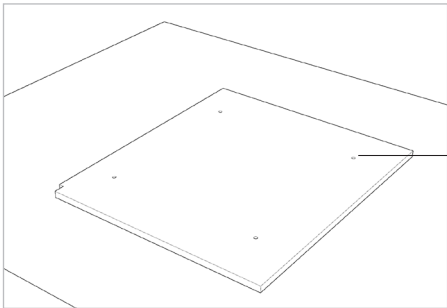
Countertop

Once your cabinets are fully leveled and secured, your kitchen is ready to receive countertop.

Take extra care when manipulating the countertop pieces as they are fragile. Make sure to transport the pieces vertically, with at least two people.

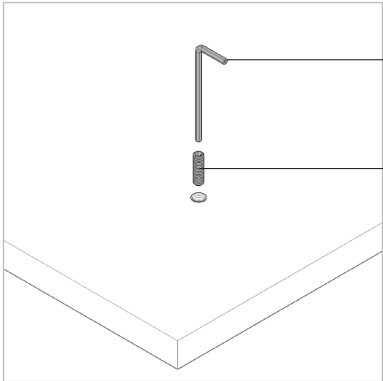


1.1 Starting with the piece that is going on the **left of the kitchen**, place it on a protected surface, threaded holes facing up.



Threaded Hole

1.2 Using an **Allen Hex Key** (provided), screw the **M6 studs** into each threaded hole.



Allen Hex Key

M6 Stud

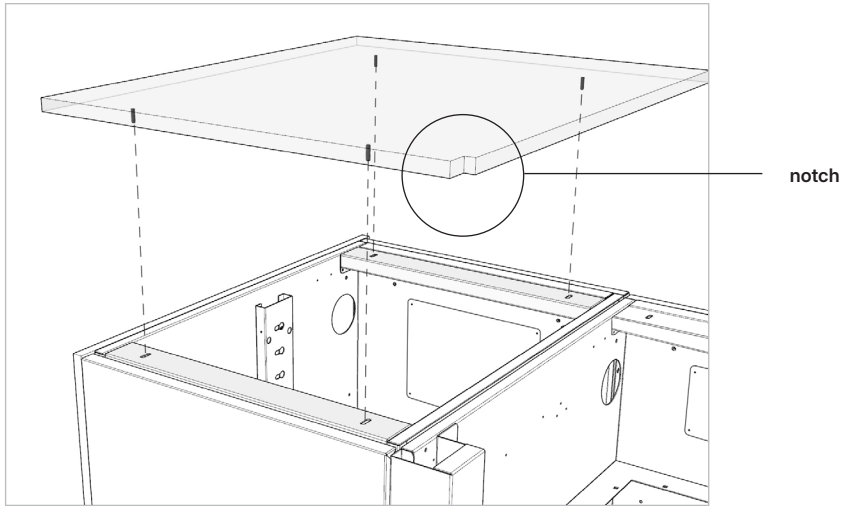


M6 STUD



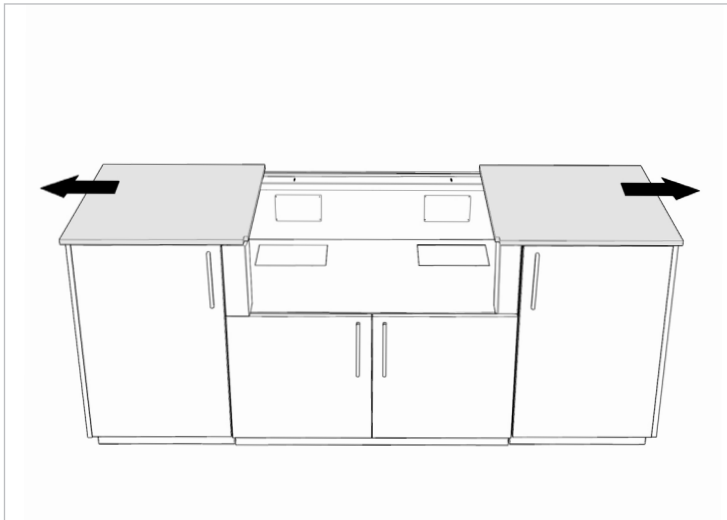
ALLEN HEX KEY

1.3 Install the countertop piece on the kitchen by carefully moving it around until the M6 studs align into the cabinet slots. **If the counter piece has a notch, make sure the notch is on the front of the kitchen.**

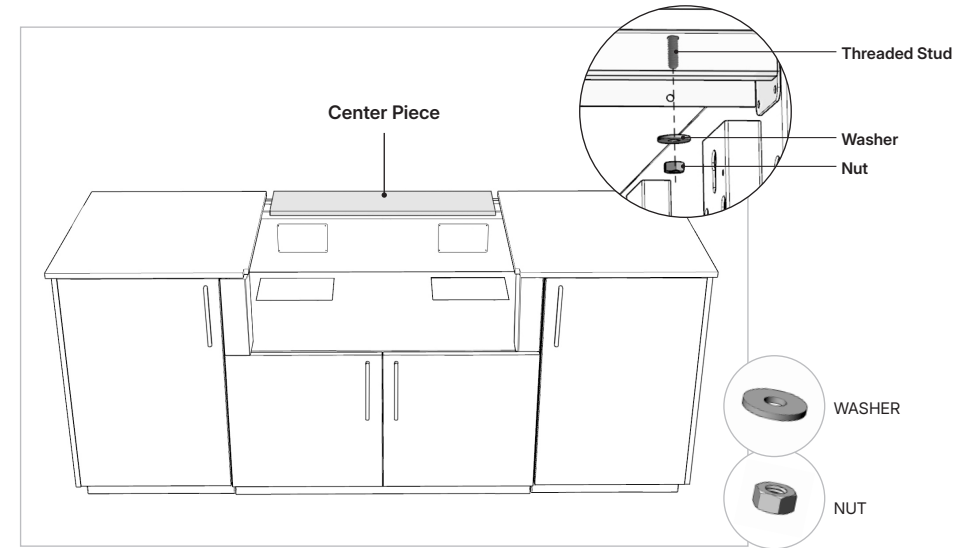


1.4 Repeat the previous steps for the counter piece that is going on the right of the kitchen.

1.5 Push each of the side sections slightly outward to allow for the center counter piece to be moved into place.

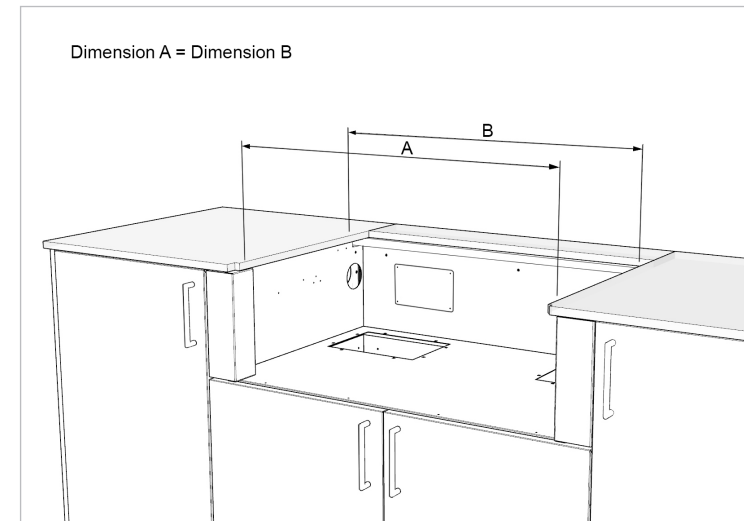


1.6 Place the center piece and loosely attach it with the provided **washers** and **nuts**.

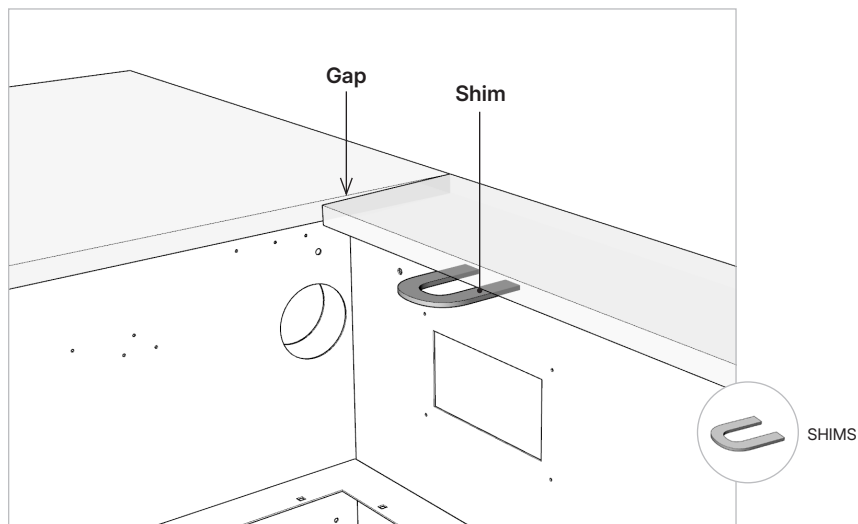


1.7 Adjust entire countertop front and back overhang as needed based on your configuration.

1.8 Carefully bring in the pieces towards the center piece. **Make sure that the width opening for appliance is consistent, from front to back (see diagram below).**

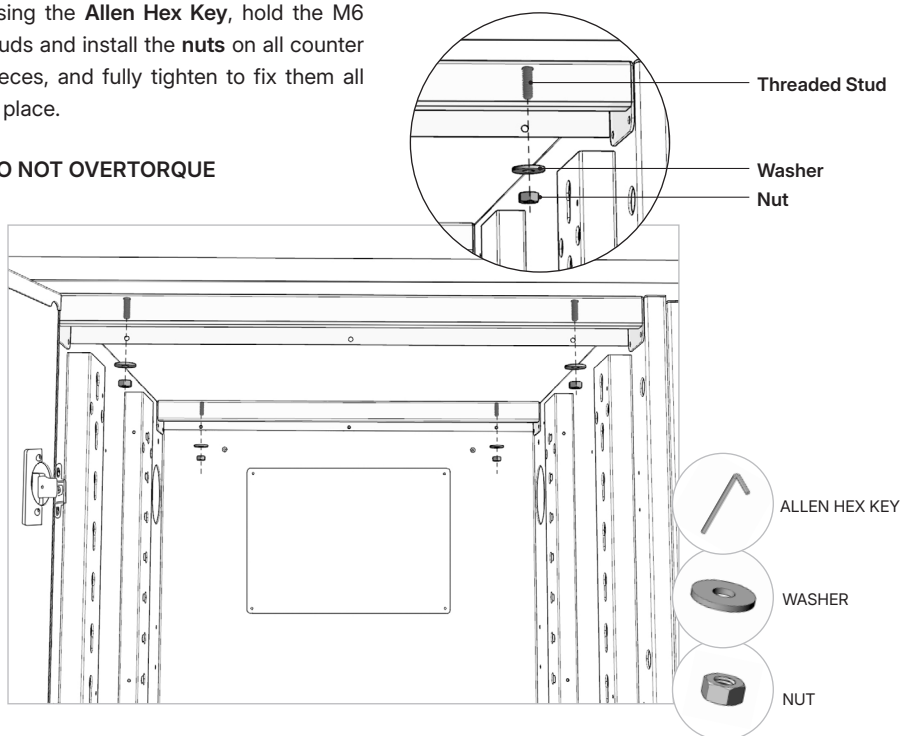


1.9 Adjust with **shims** (provided) if necessary.



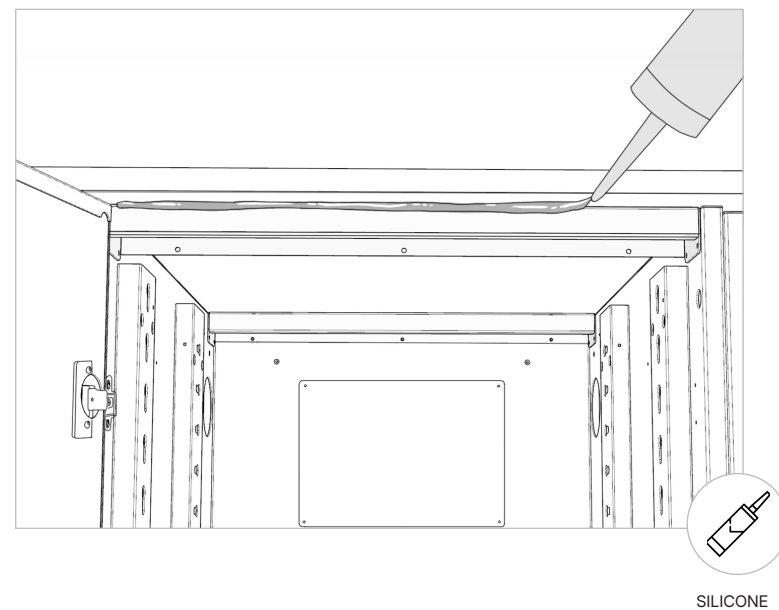
1.10 Install the **washers** to the M6 studs. Using the **Allen Hex Key**, hold the M6 studs and install the **nuts** on all counter pieces, and fully tighten to fix them all in place.

DO NOT OVERTORQUE



PRO-TIP

Although our cabinetry is fully enclosed, a bead of silicone can be added around the perimeter of the kitchen to optimize the prevention of water infiltration.

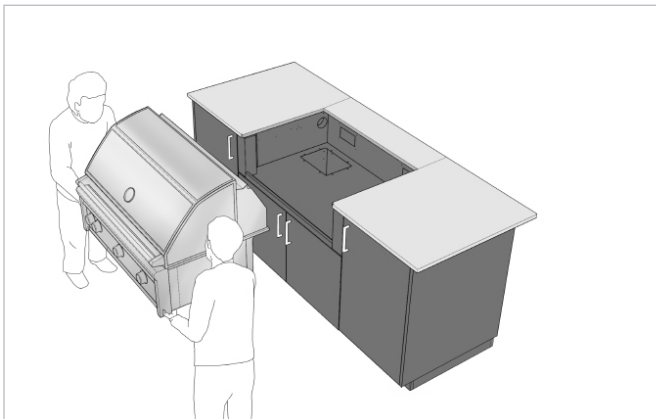


Appliances

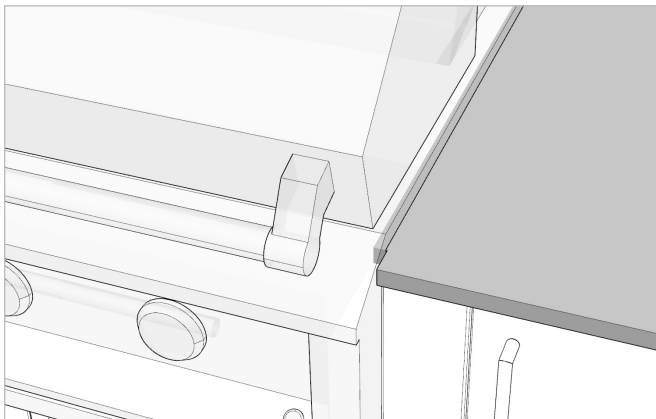
1. Grill

The built-in grill is designed to be installed **ON TOP** of the countertop. Do not place the grill on the cabinet shelf. Failure to comply could result in damage to the structure of this cabinet. Please review the owner's manuals for all appliances before installation and ensure the work is done by a professional in accordance with local codes.

1.1 Transport the grill to the cabinet with 2 persons.

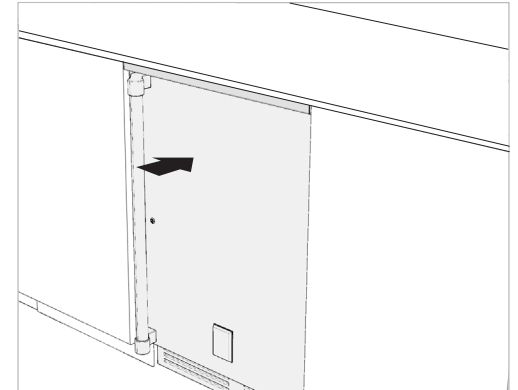


1.2 Make sure that your grill sits on the countertop and meets the notch on the front.

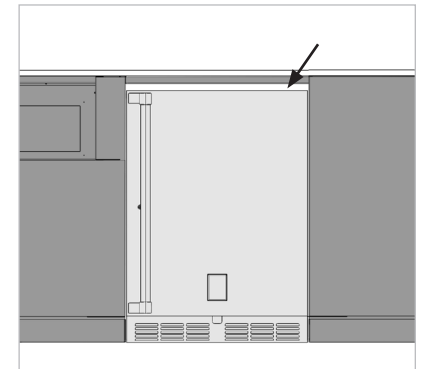
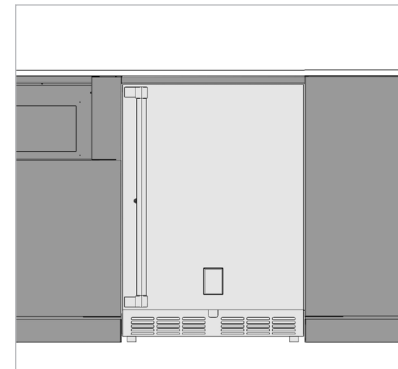


2. Undercounter Appliance (if applicable)

2.1 Slide the undercounter appliance into its opening.



2.2 If necessary, use the adjustable legs on the undercounter appliance to create a small, consistent reveal just below the top panel.

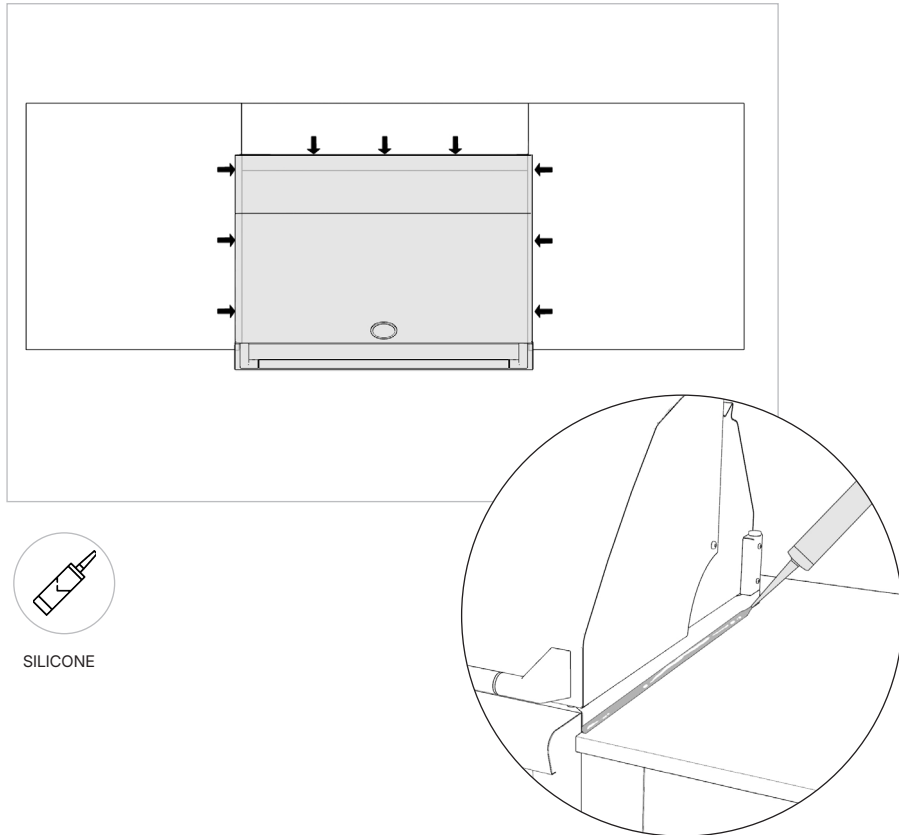


As with equipment, local codes have specific requirements and restrictions for all services. Please ensure that installation is performed by a locally licensed tradesperson.

Siliconing the Appliance and Countertop Seams

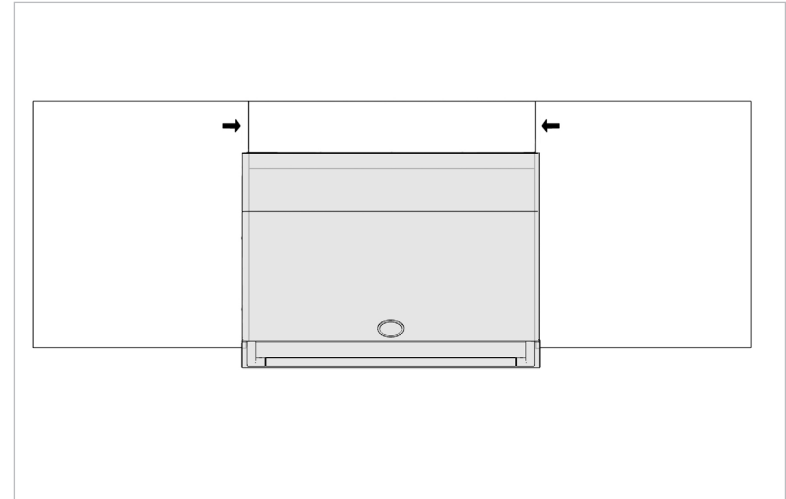
1. Seal the seams around the appliance, where it meets the countertop, using the silicone.

Having silicone around the appliance avoids unnecessary water infiltration. It also has the added benefit of keeping built-in equipment solidly in place during use, and can be easily cut through using a utility knife should the need for removing the equipment (for service, moving, or replacement) ever arise.



SILICONE

2. Seal the seams between counter pieces for best performance and results.



SILICONE

3. Remove any excess of silicone using a damp cloth.

Faucet and Sink

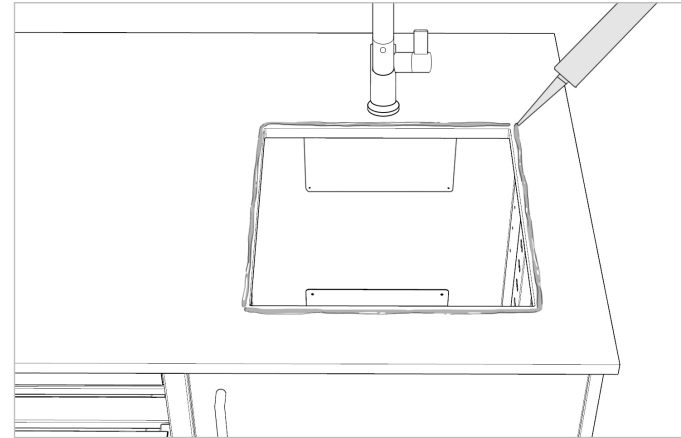
1. Faucet

Please scan this QR code below to find the instructions.

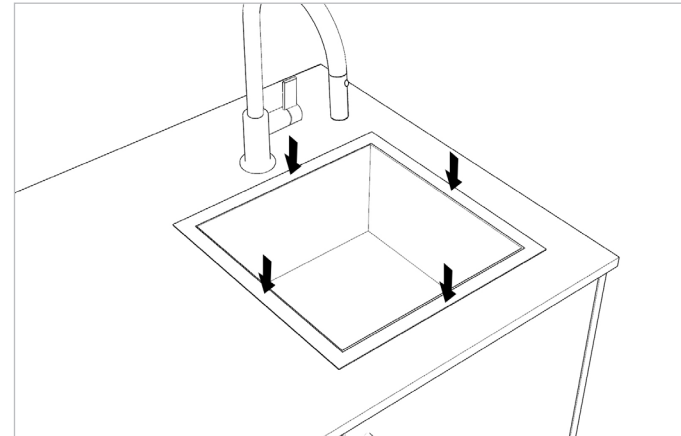


2. Sink

1. Apply a bead of silicone along the edge of the cut-out.



2. Center the sink into the opening and drop it in place. Apply even pressure to all sides.



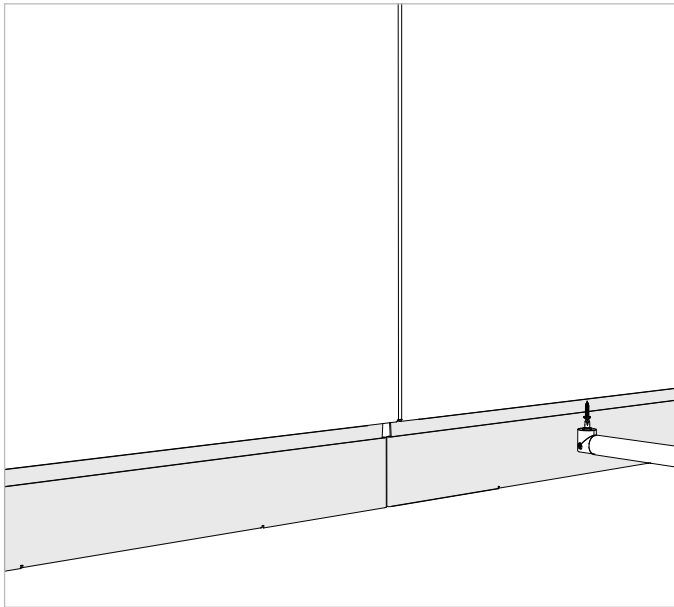
3. Remove any excess silicone with a damp cloth.

As with equipment, local codes have specific requirements and restrictions for all services. Please ensure that installation is performed by a locally licensed tradesperson.

Final Adjustments

1. Back Toe Kicks

Using a 90-degree drill bit or short screwdriver, install the toe kicks to all back panels using 3x n°8 screws per back panels.



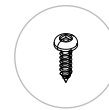
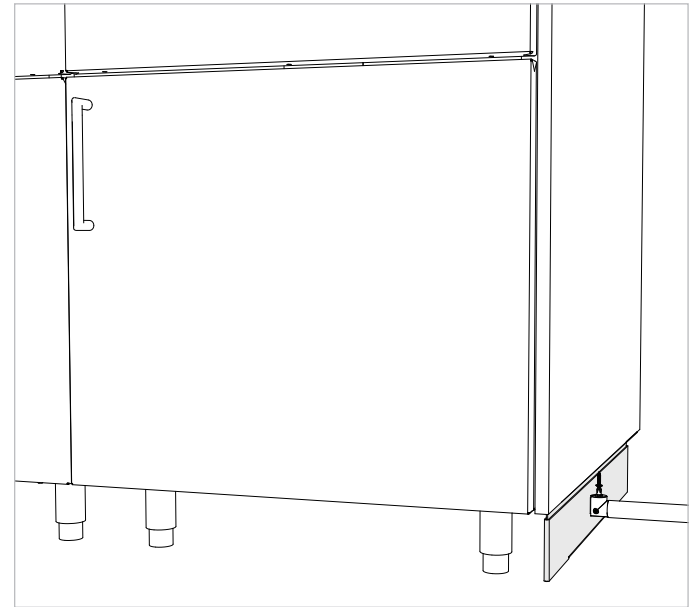
N°8 SCREW



90-DEGREE DRILL BIT OR
SHORT SCREWDRIVER

2. End Toe Kicks

Using a 90-degree drill bit or short screwdriver, install the toe kicks to both end panels using 3x n°8 screws per back panels.



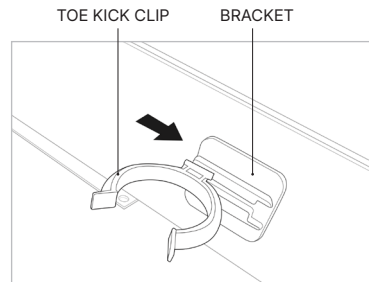
N°8 SCREW



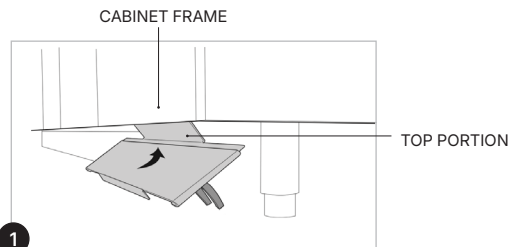
90-DEGREE DRILL BIT OR
SHORT SCREWDRIVER

3. Front Toe Kicks

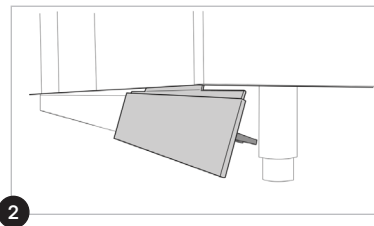
3.1 Install the Toe Kick Clips to the Front Toe Kicks by sliding them into the bracket (see right image).



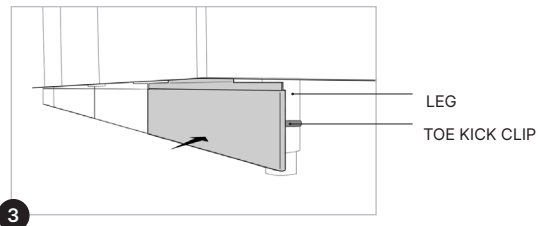
3.2 Attach the Front Toe Kicks by resting the top section on the bottom lip of the cabinet and then attaching the Clips to the stainless steel legs (see images below).



1 Hang the top portion of the Front Toe Kick onto the cabinet frame.



2 Rotate the assembly.

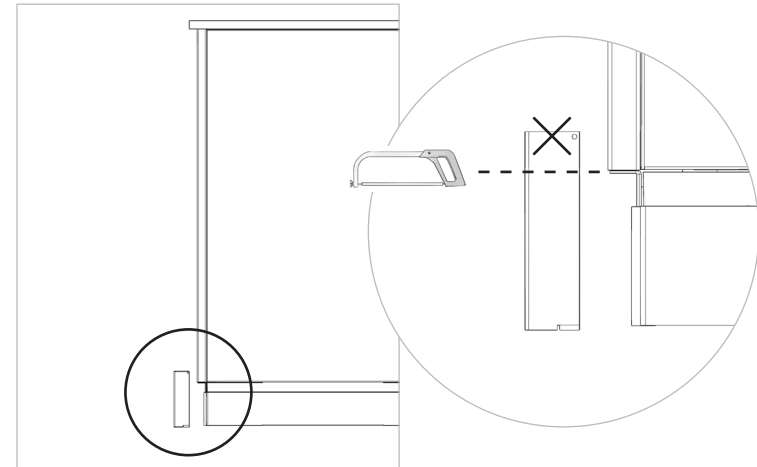


3 Toe Kick Clips attach to stainless steel legs.

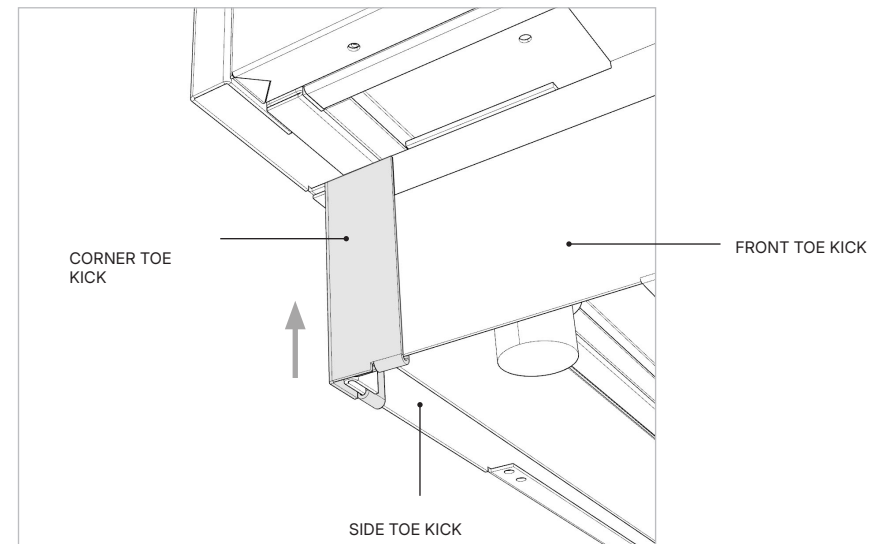
3.3 Remove tape from toe kicks (including back and side toe kicks), allowing front plates to slide down to meet the ground.

4. Corner Toe Kick

4.1 Measure Corner Toe Kick height and cut to size with **hacksaw**, keeping the lower portion.

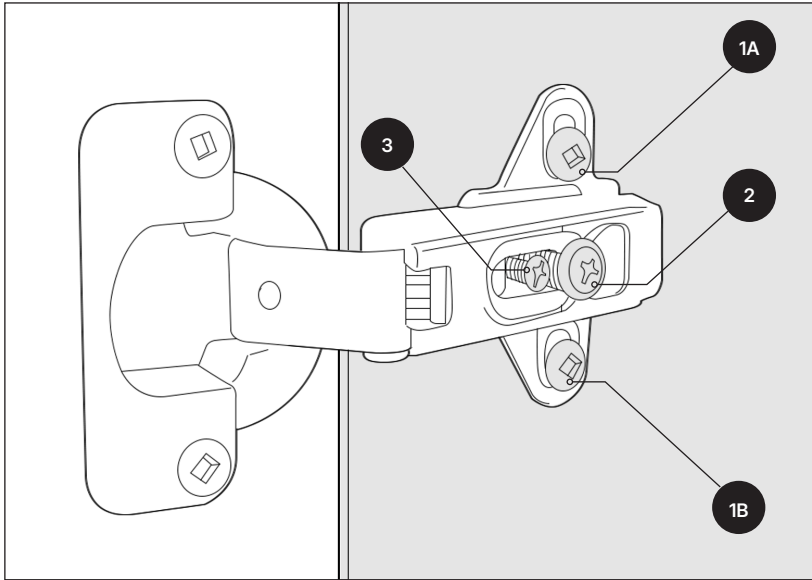


4.2 Attach the Corner Toe Kick by sliding it into the front and side toe kicks.



5. Adjusting Door Hinges

Overview



LEGEND

Screw 1A and 1B
Moves the door up and down.

Screw 2
Adjusts the depth or the door relative to the cabinet (i.e. moves the door in and out).

Screw 3
Moves the door left and right.

5.1 Door at Incorrect Height

- Loosen screws 1A and 1B on both top and bottom hinges.
- Align door at appropriate height.
- Tighten screws 1A and 1B on both top and bottom hinges.

5.2 Crooked Door

Hinges on left side, reverse instructions for right side hinges.

Leaning Right

Turn screw 3 counterclockwise on the top hinge OR turn screw 3 clockwise on the bottom hinge.

Leaning Left

Turn screw 3 clockwise on the top hinge OR turn screw 3 counterclockwise on the bottom hinge.

5.3 Door Too Far Left or Right

Hinges on left side, reverse instructions for right side hinges.

Too Far Left

Turn screw 3 clockwise on BOTH top hinge and bottom hinge.

Too Far Right

Turn screw 3 counterclockwise on BOTH top hinge and bottom hinge.

5.4 Door Not Closing Evenly

Magnet Not Hitting Strike Plate

- | | | |
|------------------------------------|----|----------------------------------|
| • Loosen screw 2 on bottom hinge. | | • Loosen screw 2 on Top Hinge. |
| • Pull door away from the cabinet. | OR | • Push door towards the cabinet. |
| • Tighten screw 2. | | • Tighten screw 2. |

Bumper Not Hitting Cabinet Frame

- | | | |
|------------------------------------|----|-----------------------------------|
| • Loosen screw 2 on top hinge. | | • Loosen screw 2 on bottom hinge. |
| • Pull door away from the cabinet. | OR | • Push door towards the cabinet. |
| • Tighten screw 2. | | • Tighten screw 2. |

Care & Maintenance

To prolong the life of your cabinetry and to remain satisfied with the product, please be sure to follow the below instructions:

Powder Coated Surfaces

Scheduled cleaning will benefit and extend the long lasting aesthetics of the finish.

This procedure is an integral part of the warranty given for surface finish and color retention and it will minimize the weathering effect of dirt and other airborne pollutants which tend to accumulate on the surface of the coating, dulling its appearance.

We suggest the following guidelines:

Scheduled bi-annually cleaning of the coating with warm water and mild detergent solution (use as recommended) and the use of non abrasive brush or sponge.

- **To avoid possible staining, the temperature of the surface to be cleaned should not exceed 85°F (30°C).**
- For removal of oil and grease, mineral spirits and isopropyl alcohol can be used.
- The cleaning solution should not be allowed to be in contact with the powder coated surface for more than 30 minutes.
- **DO NOT use any chlorides or quaternary salts on the cabinetry.**
- **DO NOT use any hydrochloric acid (muriatic acid) on cabinetry.**
- After cleaning, the surface shall be completely rinsed-off with clean fresh water.
- A record of all cleaning schedules, frequencies and products should be kept and documented.

Internal Components Maintenance

In salt air environments, regularly rinse and clean stainless steel hinges, drawer slides and handles with water. Rust speckling is normal in salt air environments and only occurs on the surface of our 304 stainless steel components. If it occurs, simply clean stainless steel surfaces with a light abrasive pad to remove the surface discoloration.

Countertop Maintenance

Please take extra care when cleaning your countertop. Although solvents, such as acetone, are often recommended by counter manufacturers and fabricators, **these substances WILL DAMAGE the powder coated finish of your cabinetry.** To avoid any mishaps, we suggest using standard detergent when cleaning your countertop.

Appliance Maintenance

Refer to the appliance manual for specific information on maintaining the grill and refrigerator (if applicable).



— EXCLUSIVE KITCHEN COLLECTION —

URBAN
Bonfire[®]
URBAN